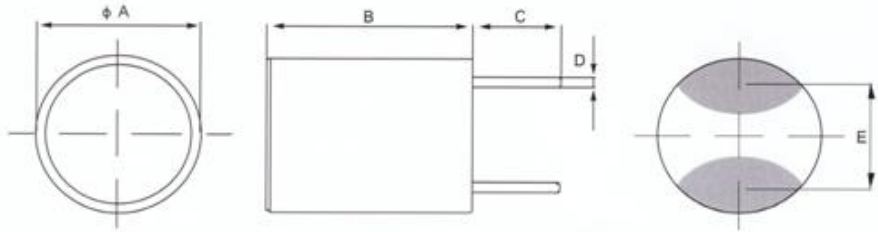


DLCP Series

● Dimensions and Land Patterns. (UNIT: mm)

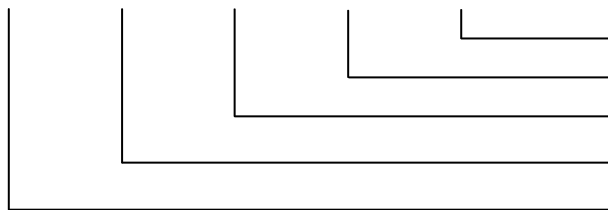


● Applications:

Audio, VCR, DVD ,etc

● Part Numbering

DLCP 110 - 101 M B



Packaging Code: B: Bulk

Tolerance : M: ±20%

Inductance Value: 101: 100uH

Dimensions: 110 、 112、 114

Product Type

Type	ΦA	B(max)	C	D	E
DLCP110	10.5	9.50	5.5	0.7	5.0
DLCP112	10.8	12.50	5.5	0.7	5.0
DLCP114	10.8	14.50	5.5	0.7	5.0

Electrical characteristics List

DLCP110 Series

PART No.	L (μH)	Tolerance	Test Condition	DCR (Ω)Max	IDC (A)Max
DLCP110-100MB	10	M	100KHZ/1V	0.0180	1.000
DLCP110-150MB	15	M	100KHZ/1V	0.0200	0.810
DLCP110-180MB	18	M	100KHZ/1V	0.0225	0.765
DLCP110-220MB	22	M	100KHZ/1V	0.0250	0.630
DLCP110-270MB	27	M	100KHZ/1V	0.0268	0.495
DLCP110-330MB	33	M	100KHZ/1V	0.0340	0.470
DLCP110-390MB	39	M	100KHZ/1V	0.0360	0.390
DLCP110-470MB	47	M	100KHZ/1V	0.0465	0.370
DLCP110-560MB	56	M	100KHZ/1V	0.0490	0.325
DLCP110-680MB	68	M	100KHZ/1V	0.0555	0.290
DLCP110-820MB	82	M	100KHZ/1V	0.0610	0.270
DLCP110-101MB	100	M	100KHZ/1V	0.0690	0.230
DLCP110-121MB	120	M	100KHZ/1V	0.0758	0.210
DLCP110-151MB	150	M	100KHZ/1V	0.0950	0.200
DLCP110-181MB	180	M	100KHZ/1V	0.1050	0.175
DLCP110-221MB	220	M	100KHZ/1V	0.1150	0.160
DLCP110-271MB	270	M	100KHZ/1V	0.1500	0.140
DLCP110-331MB	330	M	100KHZ/1V	0.1950	0.115
DLCP110-391MB	390	M	100KHZ/1V	0.2100	0.108
DLCP110-471MB	470	M	100KHZ/1V	0.2500	0.104
DLCP110-561MB	560	M	100KHZ/1V	0.2800	0.095
DLCP110-681MB	680	M	100KHZ/1V	0.3650	0.078
DLCP110-821MB	820	M	100KHZ/1V	0.4250	0.075

Electrical characteristics List

DLCP112 Series

PART No.	L (μH)	Tolerance	Test Condition	DCR (Ω)MAX	IDC Max. A
DLCP112-100MB	10	M	100KHZ/1V	0.0268	3.30
DLCP112-100MB	12	M	100KHZ/1V	0.0295	3.00
DLCP112-150MB	15	M	100KHZ/1V	0.0328	2.80
DLCP112-180MB	18	M	100KHZ/1V	0.0365	2.50
DLCP112-220MB	22	M	100KHZ/1V	0.0450	2.25
DLCP112-270MB	27	M	100KHZ/1V	0.0505	2.00
DLCP112-330MB	33	M	100KHZ/1V	0.0685	1.87
DLCP112-390MB	39	M	100KHZ/1V	0.0760	1.68
DLCP112-470MB	47	M	100KHZ/1V	0.0850	1.50
DLCP112-560MB	56	M	100KHZ/1V	0.0940	1.44
DLCP112-680MB	68	M	100KHZ/1V	0.1030	1.28
DLCP112-820MB	82	M	100KHZ/1V	0.1250	1.20
DLCP112-101MB	100	M	100KHZ/1V	0.1700	1.11
DLCP112-121MB	120	M	100KHZ/1V	0.1860	0.930
DLCP112-151MB	150	M	100KHZ/1V	0.2100	0.840
DLCP112-181MB	180	M	100KHZ/1V	0.2350	0.810
DLCP112-221MB	220	M	100KHZ/1V	0.3000	0.725
DLCP112-271MB	270	M	100KHZ/1V	0.4200	0.640
DLCP112-331MB	330	M	100KHZ/1V	0.4750	0.590
DLCP112-391MB	390	M	100KHZ/1V	0.6000	0.540
DLCP112-471MB	470	M	100KHZ/1V	0.6680	0.500
DLCP112-561MB	560	M	100KHZ/1V	0.8550	0.435
DLCP112-681MB	680	M	100KHZ/1V	1.0800	0.390
DLCP112-821MB	820	M	100KHZ/1V	1.2000	0.370

DLCP114 Series

PART No.	L (μH)	Tolerance	Test Condition	DCR (Ω)MAX	IDC Max. A
DLCP114-100MB	10	M	100KHZ/1V	0.0285	4.50
DLCP114-120MB	12	M	100KHZ/1V	0.0305	4.00
DLCP114-150MB	15	M	100KHZ/1V	0.0400	3.65
DLCP114-180MB	18	M	100KHZ/1V	0.0540	3.20
DLCP114-220MB	22	M	100KHZ/1V	0.0600	3.20
DLCP114-270MB	27	M	100KHZ/1V	0.0655	2.70
DLCP114-330MB	33	M	100KHZ/1V	0.0700	2.40
DLCP114-390MB	39	M	100KHZ/1V	0.0780	2.25
DLCP114-470MB	47	M	100KHZ/1V	0.086	2.10
DLCP114-560MB	56	M	100KHZ/1V	0.0935	1.90
DLCP114-680MB	68	M	100KHZ/1V	0.1020	1.75
DLCP114-820MB	82	M	100KHZ/1V	0.1240	1.65
DLCP114-101MB	100	M	100KHZ/1V	0.1580	1.45
DLCP114-121MB	120	M	100KHZ/1V	0.2220	1.25
DLCP114-151MB	150	M	100KHZ/1V	0.2480	1.18
DLCP114-181MB	180	M	100KHZ/1V	0.3450	1.08
DLCP114-221MB	220	M	100KHZ/1V	0.4400	0.92
DLCP114-271MB	270	M	100KHZ/1V	0.4880	0.87
DLCP114-331MB	330	M	100KHZ/1V	0.6500	0.80
DLCP114-391MB	390	M	100KHZ/1V	0.8350	0.74